

Address: Landgoed Hageveld, 2102 LN Heemstede, The Netherlands. Planning partners: MYJ groep architecten. Client: Hopman Interheem. Completion: 2008. Main materials: concrete, corten steel. Setting: rural.



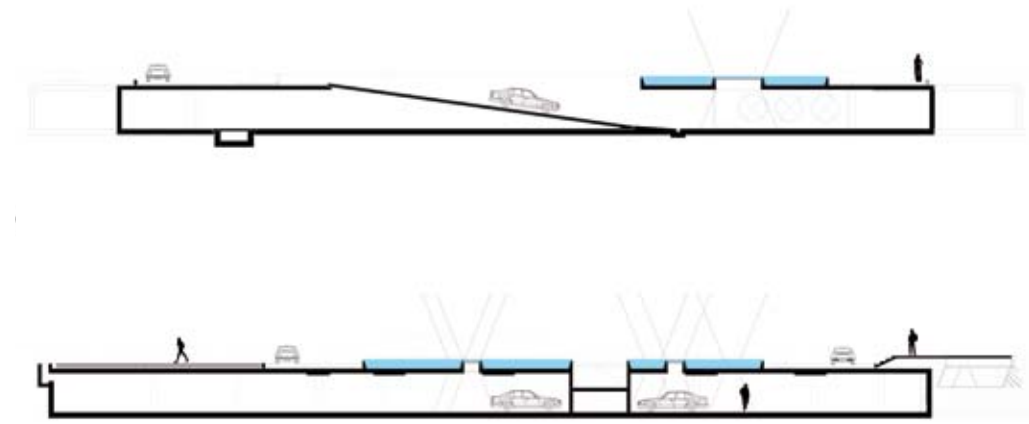
↑ | Entrance to underground car park, night view
→ | Entrance ramp, surrounding water reflects building

Estate Hageveld

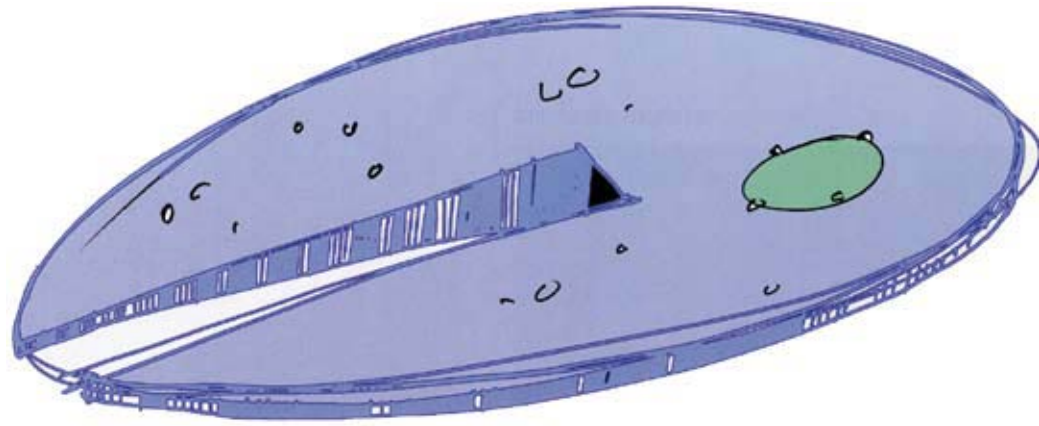
Heemstede

In 2002 a plan was made to transform the Hageveld Estate into private housing and expand the space for the school's sporting activities. The landscape intervention enhances the green character of the estate and restores the heavily damaged planting on the west side of the estate with trees. A large pond was designed on top of a new underground parking lot, creating space for the increasing number of visitors, without destroying the peaceful landscape. The entrance slope to the parking lot slits through the water and glass panels ensure daylight entering the underground space. At night-time the light from the underground parking lot shines upwards through the panels results in a very special effect. In addition, the liveliness of the water is increased by special fountains that are switched on at night.





← | Plan of parking level
 ↓ | Night view, pond surface detail



↑ | Entrance driveway to estate and
 entrance ramp to parking lot
 ← | Sketch of pond surface and parking lot
 entrance

