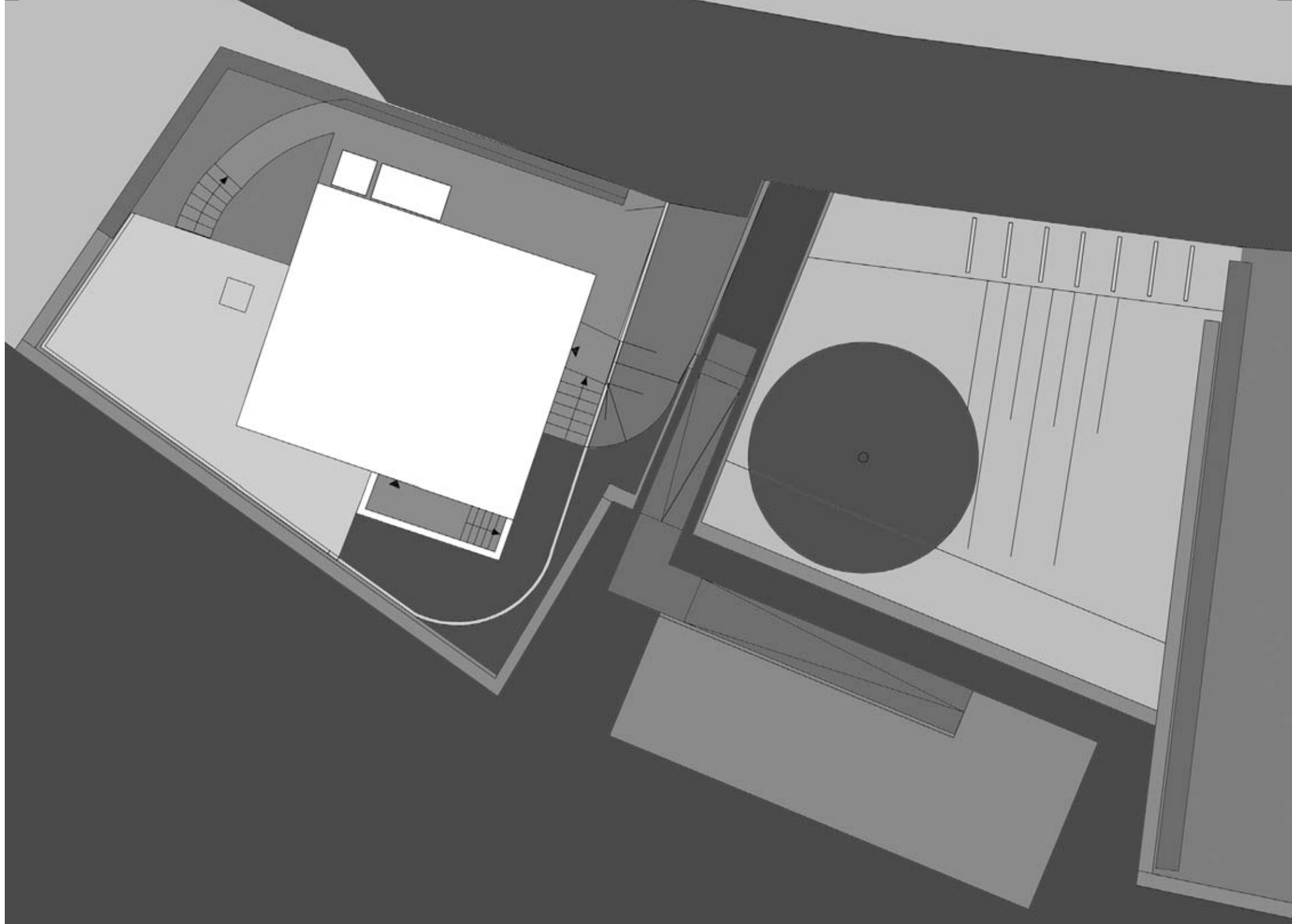


Veerstoep Hollandsche IJssel >>>



Veerstoep Hollandsche IJssel

project
design of floating pontoon shelter

location
ver-Hitland

designers
Marike Oudijk
Ronald Bron
Elizabeth Keller

client
Municipality of Nieuwekerk

size
4 x 20 m

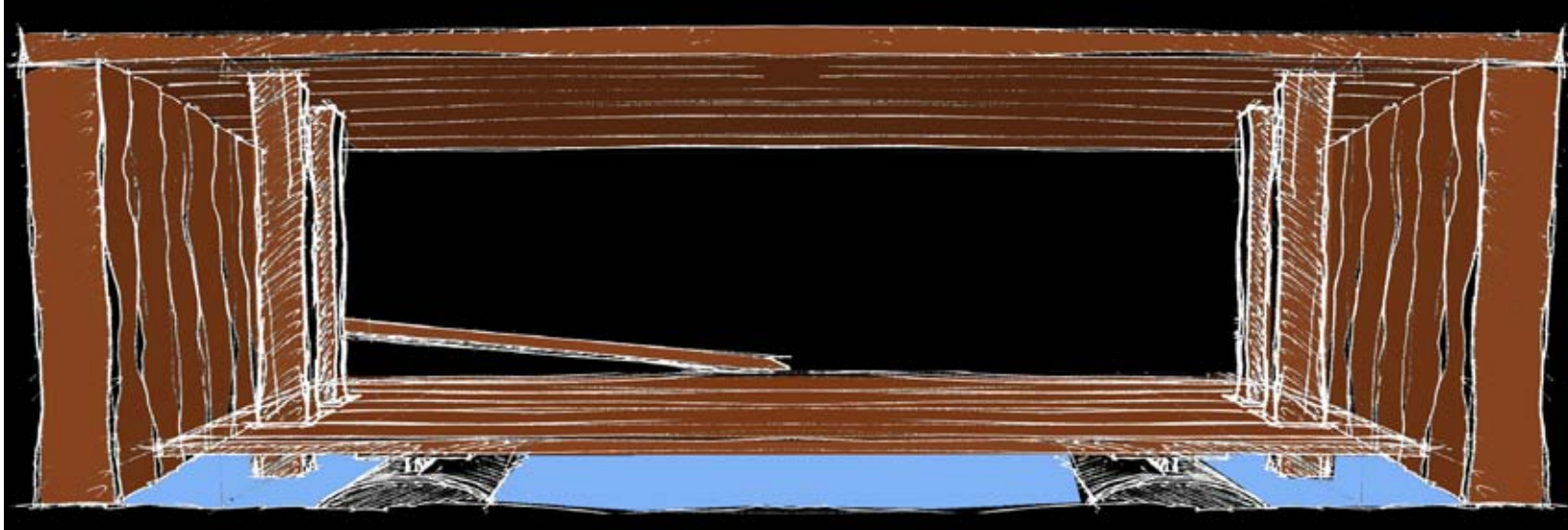
year of design
2002



current situation ferry point

Shelter forms a visor with a view of the river

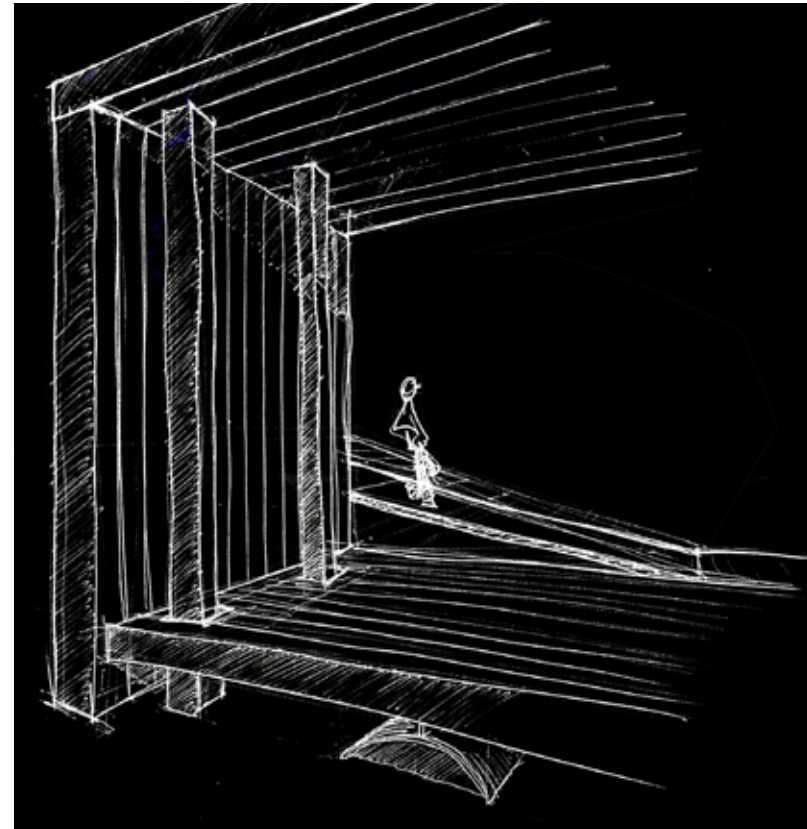
The Municipality of Nieuwekerk requested HOSPER to design a shelter for the floating pontoon in the river. The design of the shelter incorporates a roof on the floating pontoon which creates a visor with a view of the river. This visor forms a waiting area in which a freestanding counter fulfils the kiosk function. The visor's opening varies since the pontoon rises and falls with the tide. The opening is about 5 metres high at maximum low tide and 2 metres high at maximum high tide. This offers the greatest possible experience of the river's tidal character. The visor also offers a view of the river from the dike. The materials that were selected are compatible with the existing jetties along the Hollandsche IJssel, mostly sturdy wooden structures with metal accents.



impression

Renovation of the retaining wall

When work began on the project it was discovered that the existing quay wall was too low and in very poor condition. A new retaining wall would be required. Locating the new retaining wall further land inwards creates sufficient space for the construction of a floating pontoon in the water. The pontoon is then outside the navigation lane specified by the Directorate-General for Public Works and Water Management and also complies with the requirements stipulated by the water board.



impression



