

Järvafältet cemetery Stockholm >>>



Järvafältet cemetery Stockholm

project

competition design cemetery

site

Järvafältet, Stockholm, Sweden

designers

Patrick Verhoeven

Ellemijk Marks

Gerwin de Vries

Mikaela Svensson

commissioned by

Stockholm City Cemeteries

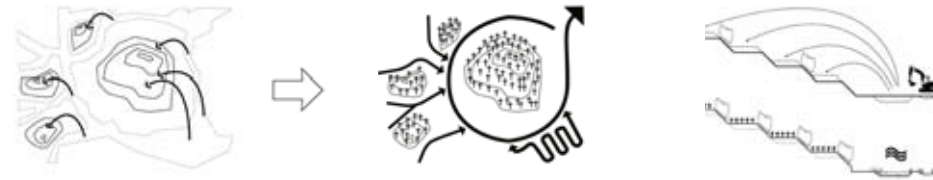
Administration

size

30 ha.

year of design

2010



The existing hills in the area are elevated and made suitable for graves on terraces, at the same time a water-filtering system is dug at the lower parts

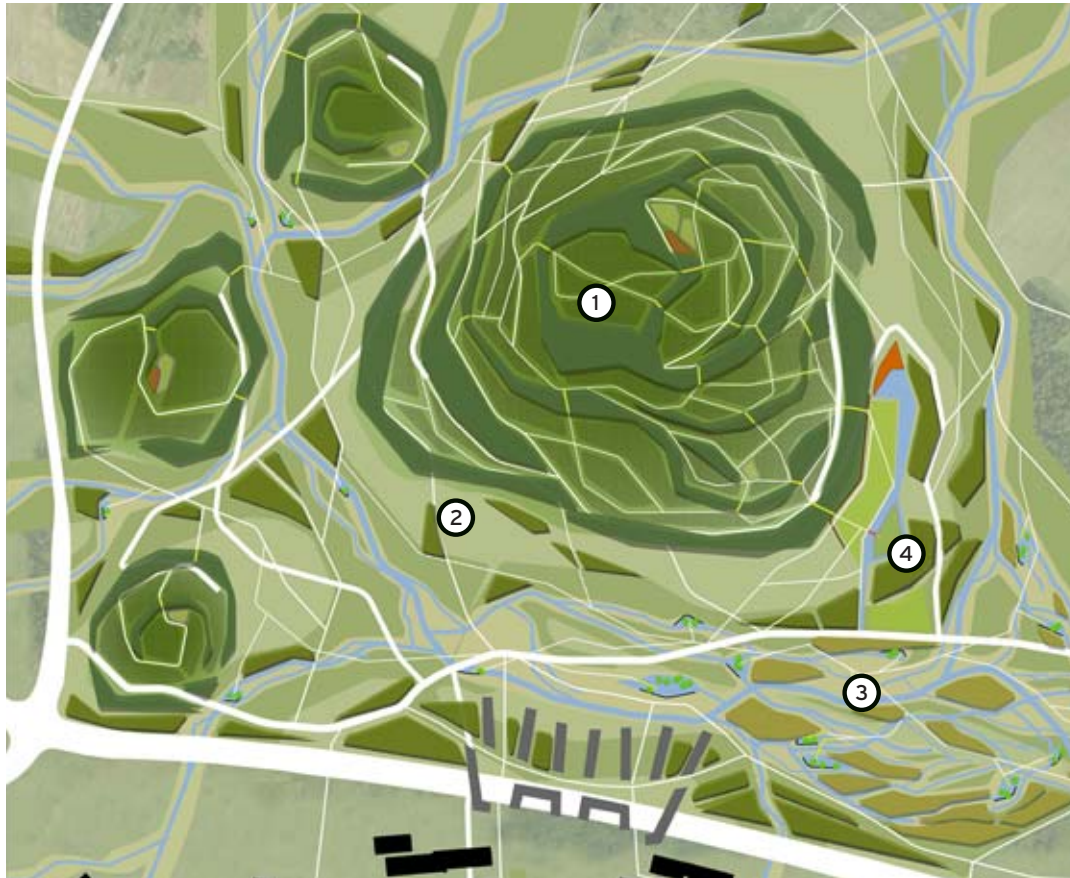
Open competition regarding a new cemetery in Järvafältet, Stockholm

Stockholm needs a new cemetery, with the same strategic importance and long-term nature as Skogskyrkogården. The competition area comprises part of Järvafältet, which is a nature reserve and one of Stockholm's green zones. High groundwater levels, a large hill comprising landfill material which is not suitable for interment, and numerous demands as regards usage provide an exciting location with many challenges and qualities.

The New Land

The concept entitled "The New Land" provides an answer to these challenges. The existing landscape will be utilised and reinforced, and weaknesses will be turned into strengths. The artificial hill will be further developed, with additional soil forming elongated burial areas in the form of terraces. The wetland areas to the south will be restored, with winding paths through the reeds leading to columbarium gardens. Between the hill and the wetlands, parkland will be established that can be used both by those living in the vicinity and by the existing businesses in the area.





2120

Hundred year perspective

The establishment of the entire cemetery will extend over at least a century, and will be developed in several phases. However, it will be a functioning cemetery right from the outset, and for this reason a permanent entrance area will be created that will include the three elements that form the basis for the coherent design. The burial hill, the wetlands and the park will be the three building blocks on which everything rests.

- ① grave hills
- ② park area
- ③ wetland with columbarium gardens
- ④ first phase, entrance area



1960-1980



2020



2040



2080



2120



design for the first phase of the cemetery (2020),
in the final phase this will form the entrance area
for the cemetery