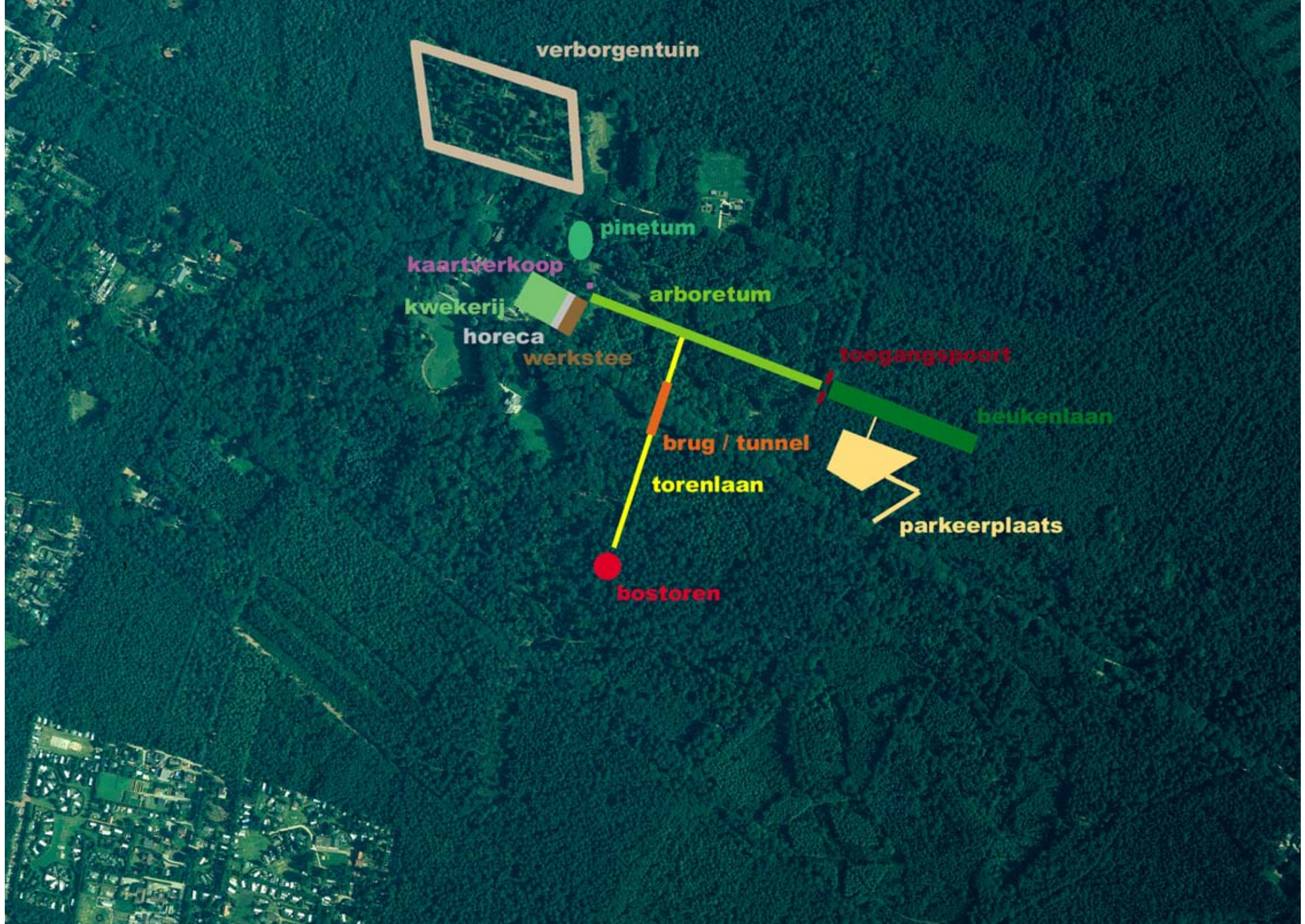


Schovenhorst Estate >>>



verborgentuin

pinetum

kaartverkoop

kwekerij

horeca

werkstee

arboretum

bostoren

brug / tunnel

torenlaan

toegangspoort

beukenlaan

parkeerplaats

Schovenhorst Estate

1st prize multiple assignment
nomination Guelder Spatial Quality
Award 2010

project
Development Vision for Schovenhorst
Estate

location
Putten

designers
Ronald Bron
Peter de Ruyter
Arjan Karssen

client
Schovenhorst foundation

size
180 ha

year of design
1997 - 2002



Transformation of a country estate

Landgoed Schovenhorst is situated at the east end of the village of Putten, on the west slopes of the lateral moraines of the Veluwe. The estate covers an area of approximately 180 hectares and is more than 150 years old.

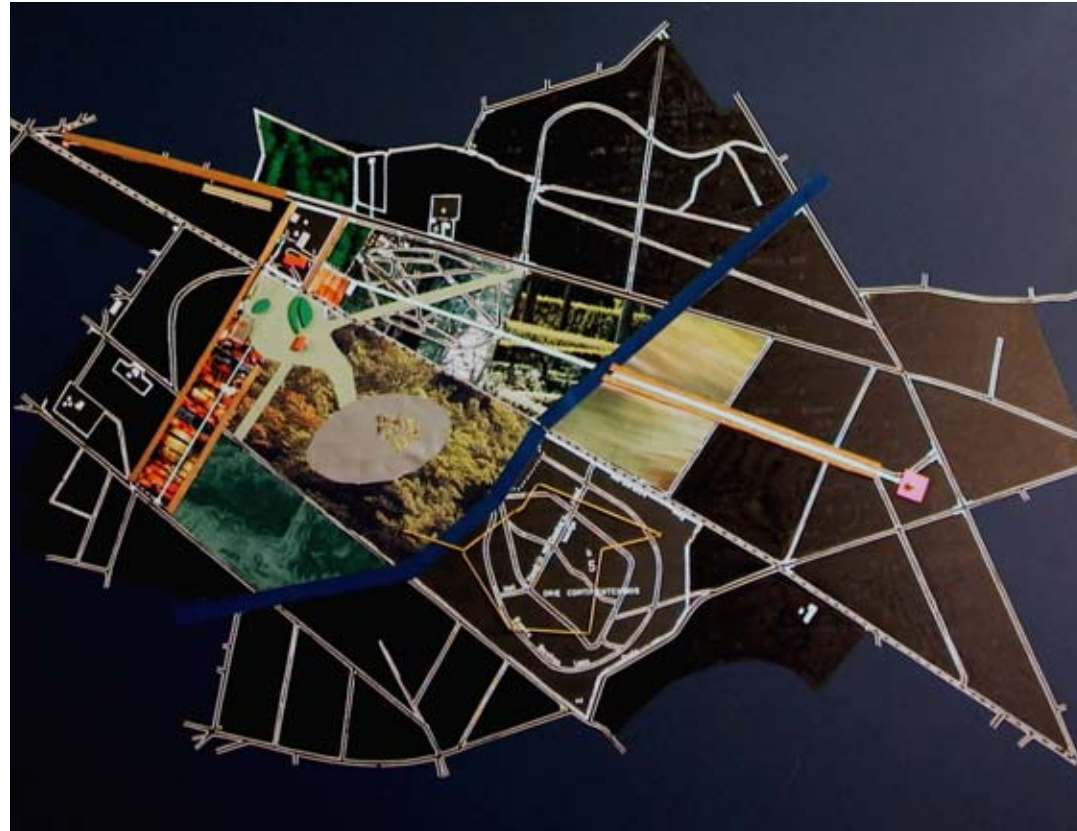
The estate is famous for its tree gardens, which contain collections of trees from different regions all over the world. The forests and tree gardens at Schovenhorst are the unique product of a period of experimentation during the search for suitable trees for forestry in the Netherlands.

In the mid-nineties collections of different types of trees were of less interest for the purposes of education and research, yet at the same time the general public began to show increasing interest. In light of these changes it was decided that the estate should be opened to the public. A multiple assignment called for ideas to envision the estate as a pleasant recreational setting.

HOSPER's winning plan revises the main spatial structure and reunites the two parts of the estate by building a tunnel beneath the busy Garderenseweg road that cuts through the estate. The plan also improves the situation at the entrance to the estate and creates more space for parking.



Pinetum Hidden Garden



preliminary design competition entry

The layout of the pineta has been reorganised and several contemporary features, such as a tree tower, a visitor centre and a tearoom, have been added to the estate.

Schovenhorst has since emerged as 'The Most Beautiful Tree Garden in the Netherlands' and now sets the scene for educational and recreational activities at the interface between nature and culture.



signage



connective building across the N303



proposal look-out post 'tree tower'



realised 'tree tower' (SeARCH, 2009)



new green fence



entrance deck

